

PRODUCTS FOR ADHERENT CELL DIGESTION AND DETECTION

TRYPLIBER DIGESTIVE FLUID (DMF FILED)

A ready-to-use, non-animal-derived digestive solution that can be stored at room temperature, being stable and gentle.

PRODUCT DESCRIPTION

TrypLiber Digestive Solution is a trypsin analog (Trypsin Like Enzyme). It features comparable dissociation kinetics to trypsin, alongside superior stability, higher purity, milder digestion performance and lower cytotoxicity.

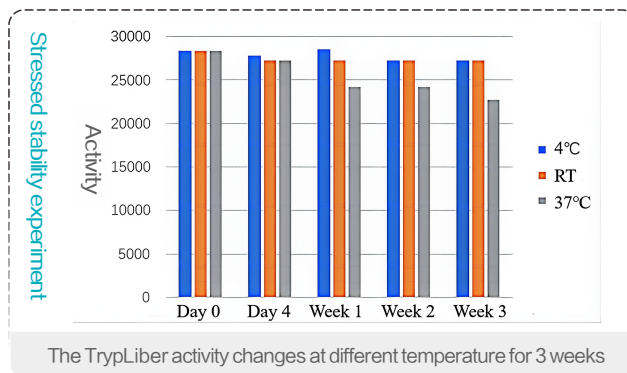
PRODUCT FEATURES

- 100+ Cell Type Validation
- Gentle digestion, better protection of cells during digestion
- Ready to use, stable at room temperature
- Non-animal derived, greatly reduces foreign contamination
- Wide range of applications, suitable for both serum and serum-free culture

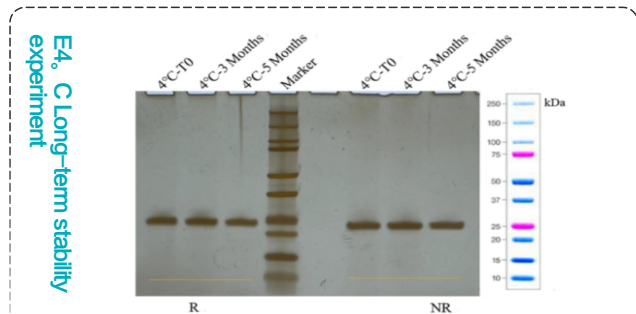
APPLICATION SCENARIOS

Passage digestion and harvesting of adherent cells, digestion and harvesting of cells cultured by microcarrier method

EXPERIMENTAL DATA

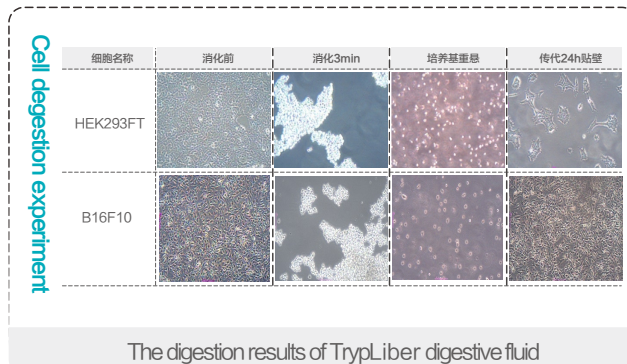


TrypLiber Digestive Solution can be stored for a long time at 4°C and room temperature, and it still retains 80% of its enzyme activity after being stored at 37°C for 1 week.



The purity changes of SDS – PAGE at 4°C for 3 months and 5 months.

During the 5 month storage of TrypLiber digestive fluid at 4°C, the purity test of reduced (R) and non-reduced (NR) SDS – PAGE protein gels showed no degradation or aggregation.



The digestion results of TrypLiber digestive fluid

After TrypLiber digestive fluid digests HEK293FT and B16F10 for 3 minutes, it has excellent digestion performance and high cell viability.

ORDERING INFORMATION

Cat.No.	Level	Name	Specification
CS-TL-100	RUO grade	TrypLiber Digestive Fluid (1X)	100 mL
CS-TL-500	RUO grade	TrypLiber Digestive Fluid (1X)	500 mL
CS-GTL-100	GMP Grade	TrypLiber Digestive Fluid (1X)	100 mL
CS-GTL-500	GMP Grade	TrypLiber Digestive Fluid (1X)	500 mL
CS-TL-100-2	RUO grade	TrypLiber Digestive Fluid (10X)	100 mL
CS-GTL-100-2	GMP Grade	TrypLiber Digestive Fluid (10X)	100 mL
CS-GTL-500-2	GMP Grade	TrypLiber Digestive Fluid (10X)	500 mL